

**ITEM 24. PARKING – CAR SHARE AND DISABILITY PARKING ONLY –
MAXWELL AND VICTORIA ROADS GLEBE**

TRIM RECORD NO: 2017/379204

RECOMMENDATION

It is recommended that the Committee endorse the following reallocation of parking:

- (A) On the northern side of Victoria Road, Glebe between the points 10 metres and 17.8 metres (one car space) east of Maxwell Road as “Disability Parking Only”; and
- (B) On the western side of Maxwell Road, Glebe between the points 18.7 metres and 23.7 metres (one car space) south of Victoria Road as “No Parking Authorised Car Share Vehicles Excepted”.

VOTING MEMBERS FOR THIS ITEM

<i>Voting Members</i>	<i>Support</i>	<i>Object</i>
City of Sydney		
Roads and Maritime Services		
NSW Police – Leichhardt LAC		
Representative for the Member for Balmain		

DECISION

BACKGROUND

The Pyrmont, Ultimo and Glebe Men’s Shed has requested a disability parking space near Jubilee Park.

In order to also service the Jubilee Park Light Rail Station, it is propose to reallocate the existing car share space in Victoria Road to disability parking.

To limit the loss of permit parking, it is proposed to relocate the car share space to the western side of Maxwell Road.

COMMENTS

Victoria Road, Glebe east of Maxwell Road is designated for two way traffic flow with an approximate width of 12.8 metres. The road and footway grades are relatively flat adjacent to this proposed space.

The kerb space on the northern side of Victoria Road, east of Maxwell Road, where the disability parking space is proposed, is currently signposted as “No Parking Authorised Car Share Vehicles Excepted”.

Footpaths (approximately 3.5 metres wide) are provided on the northern side of the street.

The Australian Standard for on-street disability parking (AS 2890.6 – 2009) requires the provision of 3.2 metre wide by 7.8 metre long bay.

A 7.8 metre long bay is proposed and with consideration for the width of existing parking lane in Victoria Road, a 3.2 metre wide bay can be accommodated within the carriageway.

The City will investigate installing ramps at this site should the proposal be endorsed.

The kerb space on the western side of Maxwell Road, south of Victoria Road, is currently sign posted as “No Stopping” for 23.7 metres.

On-site inspection shows that it is suitable to reallocate five metres of “No Stopping” to relocate the car share space.

The proposal will provide a disability parking space near Jubilee Oval and Jubilee Park Light Rail Station and limit the loss of permit parking.

CONSULTATION

The City originally consulted on a proposal to introduce a disability parking space next to the current car share space on the northern side of Victoria Road. There were 21 letters sent out with two responses supporting the proposal and one responses opposing the proposal due to the loss of permit parking.

The City has considered the feedback and amended the proposal to limit the loss of permit parking.

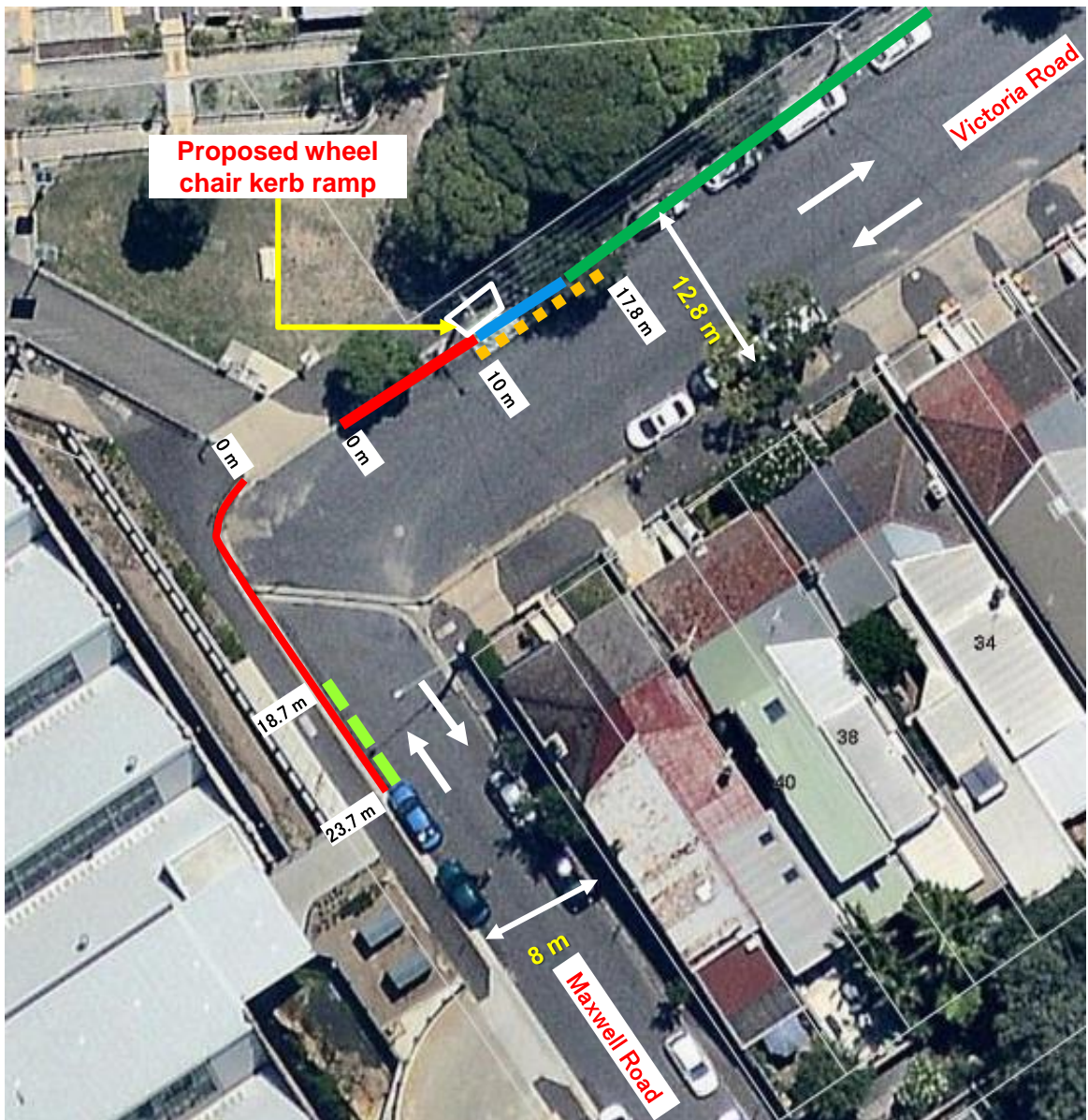
FINANCIAL

Funds are available in the current budget.

ATTACHMENTS

Parking – Car Share and Disability Parking Only – Maxwell and Victoria Roads Glebe

Ganesh Vengadasalam, Senior Traffic Engineer



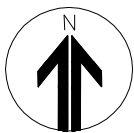
Existing Restrictions

- No Stopping
2P
8am-6pm
Mon-Fri
Permit Holders Excepted
Area G
- No Parking
Authorised Car Share
Vehicles
Excepted

Proposed Restrictions

- - - No Parking
Authorised Car Share
Vehicles
Excepted
- - - - Disability Parking Only

Source: nearmap (June 2017)



PROPOSAL

PROPOSED DISABILITY PARKING

MAXWELL ROAD, GLEBE



